



## BUDGET 2025 | 26

### GAUTENG MEC FOR FINANCE, LEBOGANG MAILE TABLED THE PROVINCIAL BUDGET ON 18 MARCH 2025.

The 2024/25 budget marks the last step and affords an opportunity for the 6<sup>th</sup> Administration to consolidate its resources in an effort to achieve the aspirations as determined at the beginning of the term. In 2019, the economy of Gauteng was on fast-paced growth trajectory, but exogenous global factors halted and slowed down the key pillars of the economy. The emergence of COVID-19 pandemic, in addition to the conflict between Russia and Ukraine, brought all economies to their knees. Provincial resources were redirected in the 2020/21 to 2022/23 financial years towards fighting the pandemic, and the battle was won. The 2024/25 budget is an instrument that is geared towards expansionary and heightening the impact of government policies and programmes. This budget outlines key government programmes and further that lays the foundation for the 7<sup>th</sup> Administration.

The Gauteng Government continues with its resilient, responsive policies and have managed to withstand the strong socio-economic pressures and effects from all persistent global and domestic risks. Despite significant budget cuts made to the provincial equitable share

baseline budgets of government, and their relative impact on Gauteng's expansionary fiscal policy stance, provincial government departments and entities have reprioritised their budgets towards high-impact elevated provincial priorities. Resources allocated through this budget will realise the following:

- Fighting crime, lawlessness, and corruption,
- Accelerating the recovery of the Gauteng economy,
- Building the capacity of the provincial government,
- Improving the lives of people in Townships, Informal Settlements and Hostels, and
- Fine-tuning the communication capabilities of government with the public.

In order to protect the budget for the provision of social services and committing to growing the economy of the Gauteng, this budget has made the following additional allocations in the 2024/25 financial year:

- Health and Education will receive R6.2 billion for

improvement of conditions of service.

- R300 million is provided to the Department of Health to cater for payment of medico-legal to avoid disinvesting from healthcare services.
- R242 million is added to the Department of Education for the employment of youth that will enable them to acquire various skills in the sector.
- R430 million is made available to contribute to sustainable energy supply in the province.

This booklet provides a pictorial and aerial view of how the provincial 2024/25 financial year's expenditure and revenue budget has been distributed. A total of R165.8 billion is allocated to all Gauteng Provincial Government departments with the Departments of Health and Education and Health respectively taking the lion's share (R130 billion or 79%) of the total provincial budget. The economic sector departments will receive a sum of R22 billion to continue growing the economy of Gauteng. This budget demonstrates GPG's commitment to protect the fundamentals and core mandate of the province. ■



To access the full  
2025 Gauteng  
Budget Speech  
and the Gauteng  
Budget, please  
visit us at:

[www.gauteng.gov.za](http://www.gauteng.gov.za)

### Access to Information

Visit our website at:  
[www.gauteng.gov.za](http://www.gauteng.gov.za)

Comments on the budget are welcome and can be forwarded to:

Head of Department  
Gauteng Provincial Treasury  
Marshalltown  
Private Bag X12  
Johannesburg  
2107

Telephone number: 011 227 9000



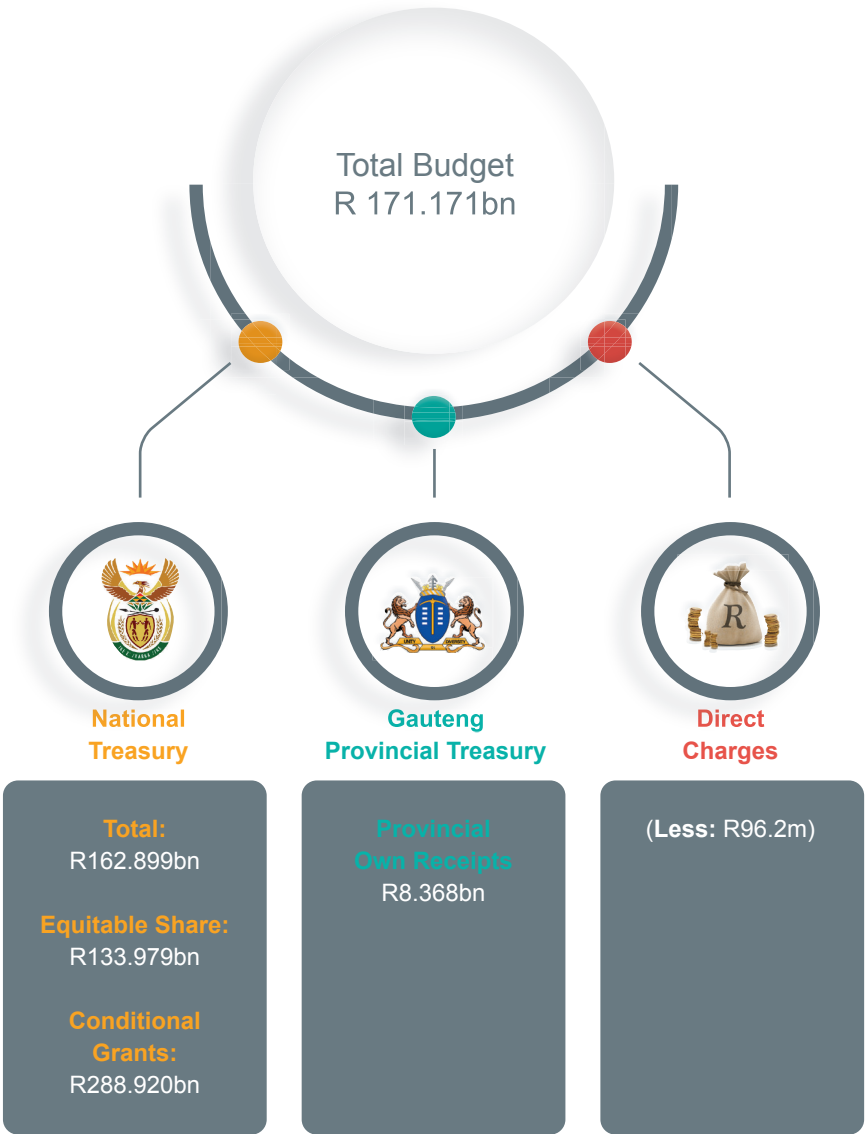
**GAUTENG PROVINCE**  
TREASURY  
REPUBLIC OF SOUTH AFRICA



## Medium Term Development Plan: Strategic Priorities



## Sources of Our Budget



## Own Revenue

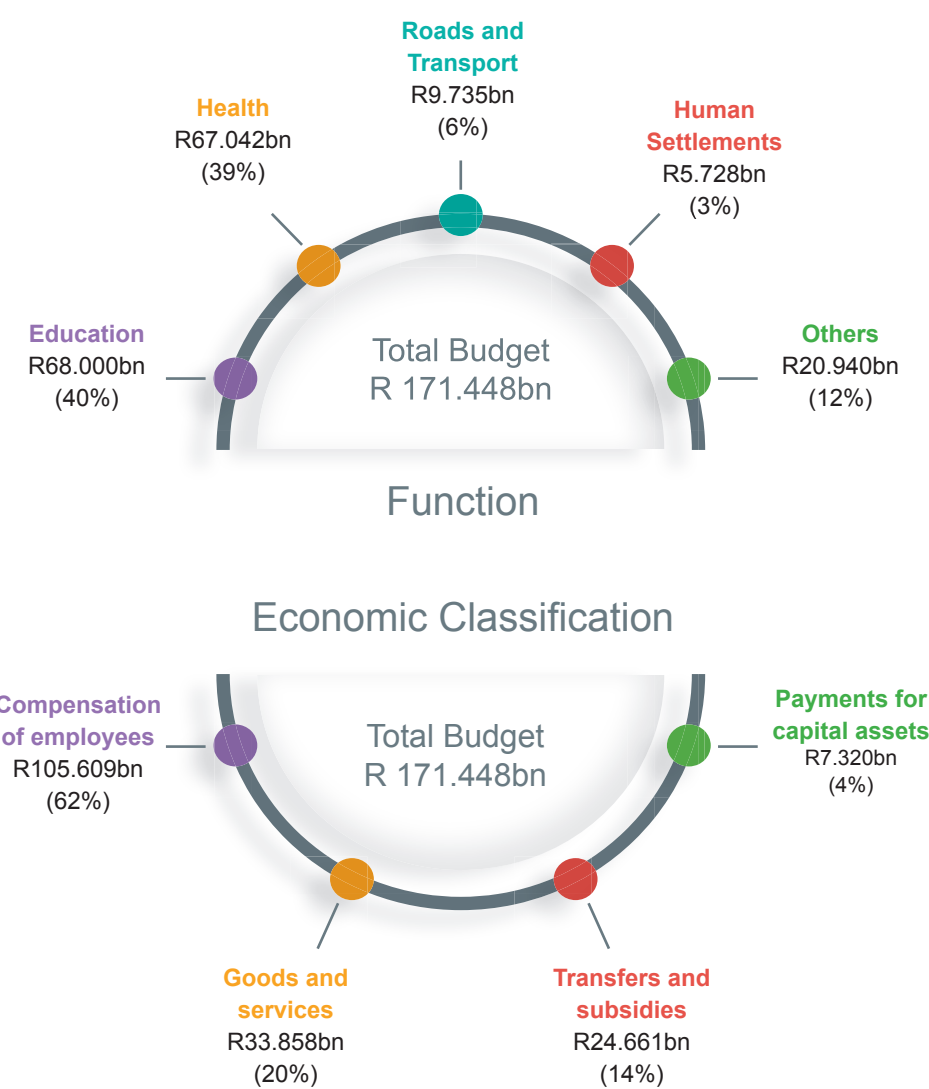


**Other revenue** consists of fines, penalties and forfeits; interest; and financial transaction in assets and liabilities.

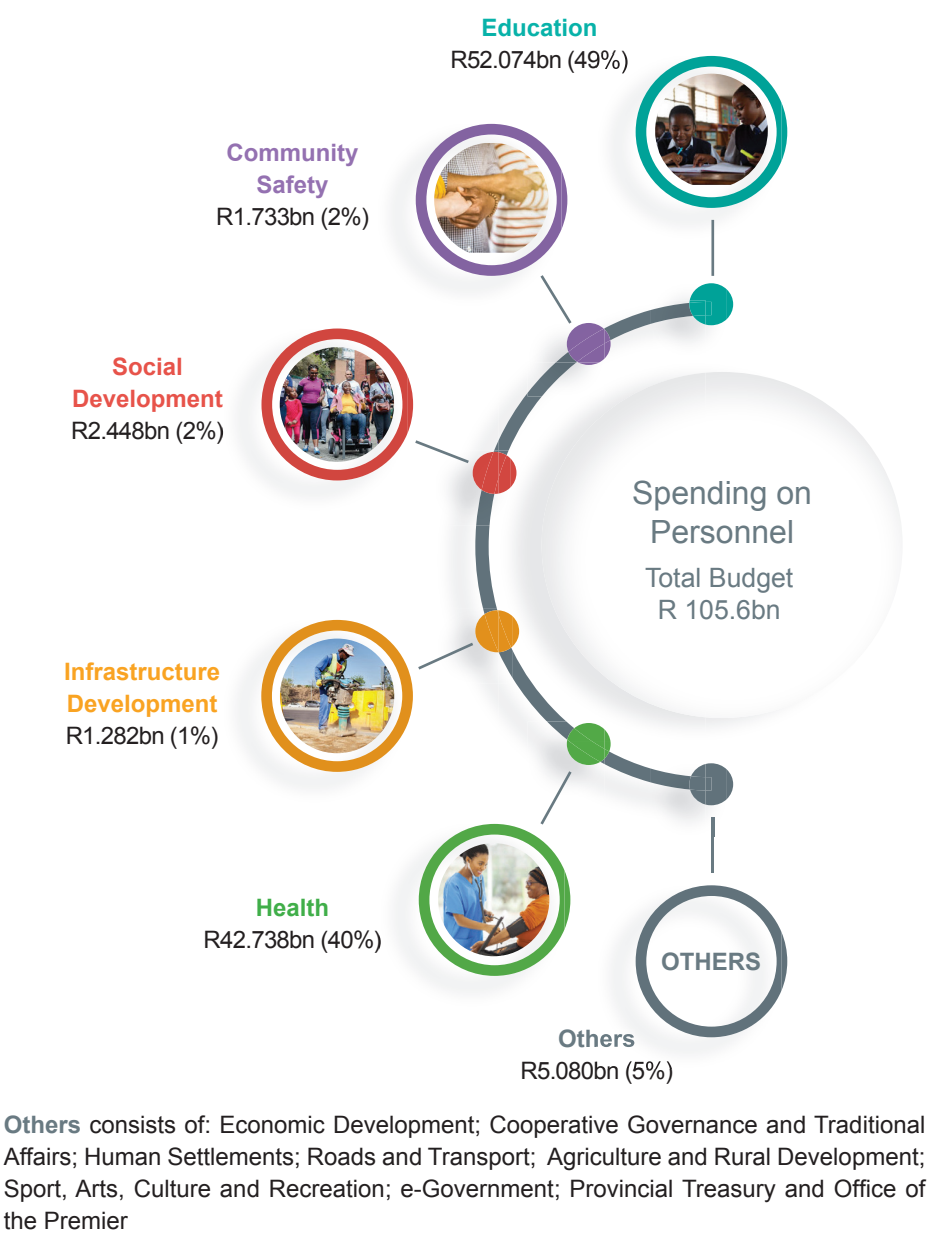
## Conditional Grants



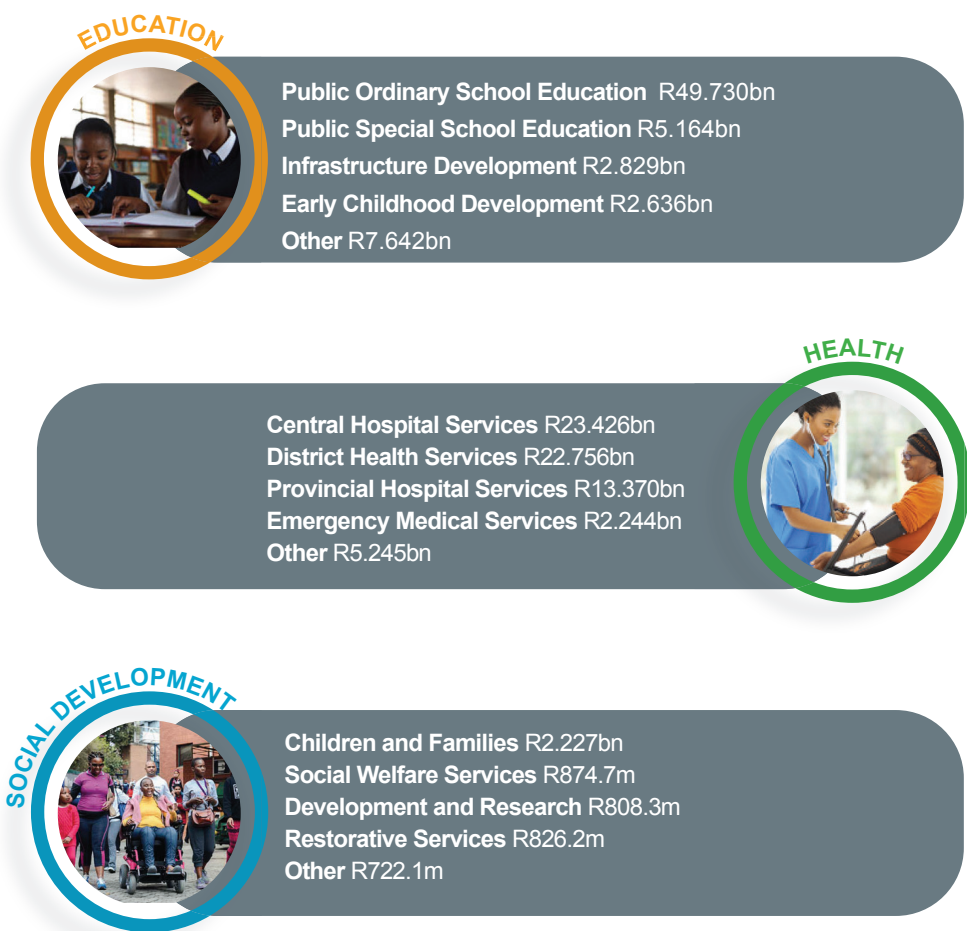
Provincial Spending



Spending on Personnel



Spending on Social Services




Total Social Services = R 140.501bn

Spending on Infrastructure



Spending on Infrastructure cont.



Health

R1.777bn

Improving quality of health care.

- Central Corridor
- R693.5m
- Eastern Corridor
- R242.5.4m
- Northern Corridor
- R376.3m
- Southern Corridor
- R160.4m
- Western Corridor
- R178.9m
- Across various Corridors
- R123.9m




Education

R2.829bn

Improving quality of education.

- Central Corridor
- R411.9m
- Eastern Corridor
- R512.1m
- Northern Corridor
- R448.9m
- Southern Corridor
- R153.1m
- Western Corridor
- R199.9m
- Across various Corridors
- R1.103bn




Roads and Transport

R2.898bn

Improving roads and linkage in the province.

- Central Corridor
- R808m
- Eastern Corridor
- R1.3m
- Northern Corridor
- R822.7m
- Southern Corridor
- R308.2m
- Western Corridor
- R42.6m
- Across various Corridors
- R915.3m



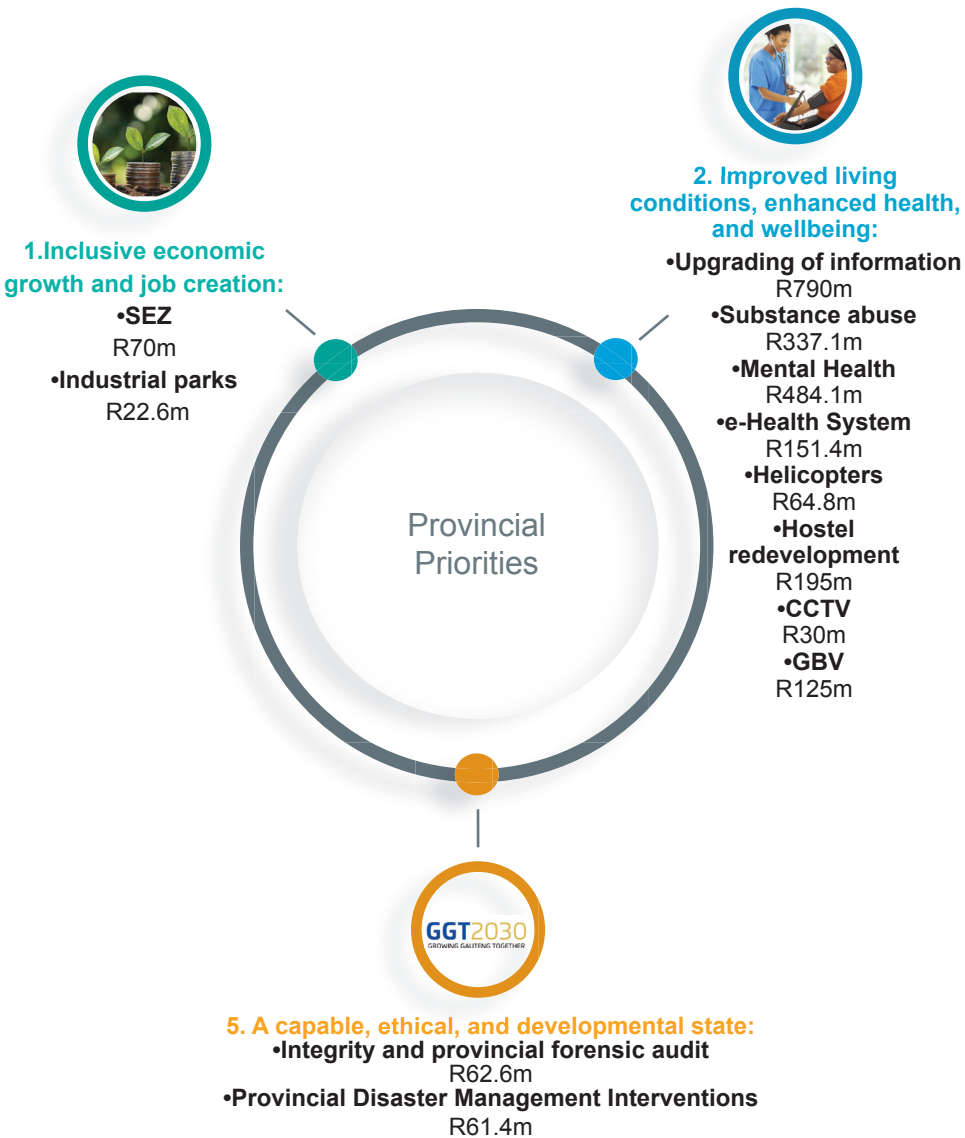
Human Settlements

R4.826bn

Improving quality of household life.

- Central Corridor
- R447.1m
- Eastern Corridor
- R571.6m
- Northern Corridor
- R120.9m
- Southern Corridor
- R1.180bn
- Western Corridor
- R1.882bn
- Across various Corridors
- R623.4m

## Provincial Priorities



## Where Have We Increased Our Spending?

| DEPARTMENT                              | ADJUSTMENT APPROPRIATION 2024/25 | MAIN APPROPRIATION 2025/26 | % CHANGE 2024/25-2025/26 |
|---|----------------------------------|----------------------------|--------------------------|
| Health                                  | 65 884 726                       | 67 042 497                 | 2%                       |
| Education                               | 65 140 194                       | 68 000 575                 | 4%                       |
| Social Development                      | 5 810 376                        | 5 458 504                  | -6%                      |
| Roads and Transport                     | 9 813 401                        | 9 735 819                  | -1%                      |
| Human Settlements                       | 6 091 565                        | 5 728 727                  | -6%                      |
| Community Safety                        | 2 567 149                        | 2 362 718                  | -8%                      |
| Other                                   | 13 906 326                       | 13 119 193                 | -6%                      |
| Total provincial payments and estimates | 169 213 737                      | 171 448 033                | 1%                       |
| Social                                  | 136 835 296                      | 140 501 576                | 3%                       |
| Non Social                              | 32 378 441                       | 30 946 457                 | -4%                      |
| Total Appropriation                     | 169 213 737                      | 171 448 033                | 1%                       |

**Other** consists of: Economic Development; Cooperative Governance and Traditional Affairs; Infrastructure; Agriculture and Rural Development; Sport, Arts, Culture and Recreation; Environmental Affairs; e-Government; Provincial Treasury and Office of the Premier